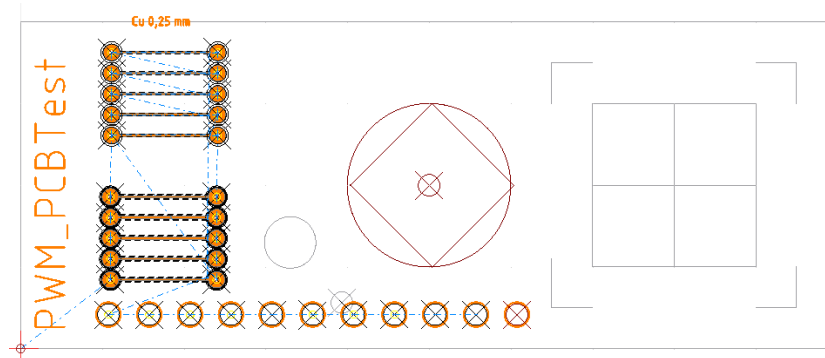


Hallo Andrew,

I had updated QCAD/CAM to 3.23.0.2 and I am confronted with a major bug in the toolpath generator.



The job at hand is lasercutting a Printed Circuit Board. The laserbeam diameter is about 0,04 mm (0,08mm effective). To achieve enough insulated space between the conducting lines of the PCB, the carved paths are widened by using the HPGL-technique called 'shifted multipass', known to CNC-machinebuilders as 'overstepping'.

Overstepping can be achieved by toolpath offsetting using fictive tools and fictive diameters. In the previous release of QCAD this works fine.

However, it turns out the latest release of QCAD handles generating the toolpaths in a different manner.

For what I can make of it, it seems the used offset-routine of the toolpath generator has a malfunction bij joining the offsetted entities/ sections.

